

## Custom Software

### White Labeled Platform

- Create training
- Create webinars
- Manage users
- Extend support to parents
- Certificates of completion
- Generate reports
- Custom messaging system
- Reminders for users



TC

developed the first Learning Engagement System (LES) blending synchronous and asynchronous learning, exclusively for K-12 faculty and families.

TC

unique white labeled platform generates revenue for the school district in three different ways.

TC

is a hybrid model, providing on-demand virtual engagements for foundational learning along with webinars, workshops, presentations, coaching and consulting.

TC

turns vendors into sponsors to further our mission of fully funded services for districts nationwide.

TC

allows you to create a highly customizable library of on-demand virtual learning.

TC

has an extensive library of personal growth and professional development from national content experts with stimulating video-based training. Sample topics listed below:

- *Psychosocial Emotional Learning*
- *Mental Health*
- *Social Justice and Equity*
- *Health & Wellness*
- *School Culture*
- *Mandates*
- *Legal & Ethical*
- *Leadership*
- *Orientation*

# Consortium Plans

To save you time, energy, and budget, TeacherCoach will serve as a curator of content for both personal growth and professional development. We will ensure that mental health, SEL, trauma, equity and other critical content areas are addressed throughout the year. With our innovative delivery system, educators **and** families in your community will have easily accessible, private, and expert support to reduce the potential of mental health problems, burnout and district liability. With live workshops including interactive theatre with professional actors, your faculty will value our support.

<i>Silver</i>	<i>Gold</i>	<i>Platinum</i>
LES Full System	Silver+	Gold+
Mental Health Package	Extended SEL, Mental Health, & Wellness Engagements	5 Additional Sets
Live Monthly and Archived Webinars	Stress Inoculation & Resilience Training	Live Theater Workshop Series
Monthly Blog and White Papers	Group Coaching	Admin Retreat
Assessment and Tracking	Walnut Theatre Student Series	Parent Workshop Series
Parent Access	Leadership Consultation	Educator Assistance Program (EAP)
Weekly Email Support	County Wide Workshop for District Leaders	Book Study Groups
\$6/Additional Sets *	\$5/Additional Sets *	\$4/Additional Sets *
<b>Cost</b>	<b>Cost</b>	<b>Cost</b>
6k/ District w/ one sponsor	9k/District w/ one sponsor	12k/District w/ one sponsor
3k/District w/ two sponsors	6k/District w/ two sponsors	9k/District w/ two sponsors

*With all county districts participating, attracting new sponsors to subsidize the ongoing support programs will be made easier, keeping cost down for individual districts. In addition, the creation and sharing of content will bring new revenue into the county for additional programming. Our primary sponsors, Teacher's Pension Consulting and Keenan Benefits, would be approved by each district.*

\* The cost for additional sets reflects the virtual on-demand library of personal growth and professional development. The cost for additional sets includes a formula with #teachers, #sets, and multiplier.

# Silver Package

---

## SERVICE DESCRIPTIONS

### ***LES Full System***

Complete use of the Learning Engagement System to create your own engagements or webinars, generate reports, send out reminders, generate certificates and more. This on-demand personal growth and professional development software is easily navigated through your dedicated district portal. Enterprise clients (over 1000) incur an addition fee for the platform (@\$1 month/user).

### ***Mental Health Package***

The most stimulating and sustainable on-demand training in the country, integrating personal growth and professional development. The full funded mental health and SEL package (with sponsor) includes the Covid-19 series, an SEL Themed Play (for teachers and students), Anxiety in Children Overview, Anxiety Overview, Depression Overview, SEL Overview, Stress Overview, Equity Part I, Home School Partnerships Part I, Communication Part I, Class Climate & Behavior Part I. Additional sets can be found in our [virtual menu](#).

### ***Live Monthly & Archived Webinars***

Faculty and family can participate in monthly webinars from a matrix of mental health and wellness topics established at the start of the year. Members can also access the entire history of webinars including twenty specific Covid-19 related topics such as remote instruction and SEL.

### ***Monthly Blog & White Papers***

Our content experts provide monthly insight into key issues facing educators. These resources help to build your library for faculty and families and keeping everybody current on hot topics. Members also receive a monthly newsletter featuring educators and select districts.

### ***Assessment and Tracking***

Pre and post surveys will be created and implemented to ensure the stabilization of faculty and prevention of harmful trends toward mental health problems and professional disengagement. Targeted data or faculty wide metrics can be the focus of this work.

### ***Parent Access***

Parents can take any virtual engagement authorized by the portal manager, helping parents feel supported. Schools as the hub of community wellness will aid in the healing of entire communities.

### ***Weekly Email Support***

Your portal has an advanced communication system with analytics, allowing you to send out reminders on engagements and for general messaging. TC will send out regular supportive messages to reinforce learning from the live and virtual training. These messages will help faculty and families feel cared for.

# Gold Package

---

## SERVICE DESCRIPTIONS

### *Extended SEL, Mental Health & Wellness Engagements*

Virtual on-demand engagements will be added to deepen the foundational appreciation of important topics from the first package. This allows for more experiential learning in the live workshops.

### *Stress Inoculation & Resilience Training*

Resilience is a complex psychological phenomenon in need of better understanding. With a greater appreciation for the resilience formula and the components that make up this necessary shield for chronic duress, faculty will resist burnout and better support their students.

### *Group Coaching*

Some of the most cathartic and rewarding support comes from collegial learning, using both content and process learning. Groups will run continuously throughout the year with limited enrollment for districts based on scheduling restrictions.

### *Walnut Street Theatre Student Series*

The oldest theater in the county, The Walnut, has helped to produce two on-demand six part series for teachers to experience with their class. The hip-hop musical drama designed to inspire students as a prevention and intervention tool (K-6). Helping classroom teachers (K-6) with discussion questions, information, and resources to turn this medium into the perfect classroom lesson. The option for a live on-site workshop for students can be added. "Please Mute Yourself" is a live professional production converted into an on-demand series teachers can watch with their middle and high school students.

### *Leadership Consultation*

The superintendent roundtable will have three yearly meetings with TC to brainstorm strategic interventions and assess progress. Unique district challenges including personnel, community issues, revenue generation, public relations and personal health are all appropriate topics.

### *County Wide Workshop for District Leaders*

To help reduce person duress and improve support for your faculty, a county wide experiential session will be held to improve understanding of the intersection of Mental Health, SEL, Equity, Trauma, and wellness.

# Platinum Package

---

## SERVICE DESCRIPTIONS

### *Live Theatre Workshop Series*

These live events restore professional development as an exciting and restorative event, preparing educators to tackle the critical personal and professional challenges of educating during a pandemic. This is an ongoing three- part series that builds on themes of social justice, resilience, and SEL. This will be the most rewarding training your faculty have ever participated in.

### *Admin Retreat*

To set the tone for the year and ensure the implementation of the district wide plan, district and school leaders can work to embrace a paradigm of prevention and intervention. These workshops address theoretical foundations, immersive experiences, team building, and skill development. Only a select number of districts will be eligible, due to schedule conflicts and time constraints.

### *Parent Workshop Series*

Experiential support for parents will be conducted each month. These events will help caregivers address issues of parenting, mental health, wellness, and SEL. Parents will be appreciative of the innovative approaches such as student actor scenarios and practical supports to rehearse at home.

### *Educator Assistance Program (EAP)*

Each educator is entitled to participate in small 3- week psychoeducation group covering topics ranging from personal issues (stress, finances, nutrition, relationships, parenting) or professional topics (behavior management, identifying underlying issues, peer relationships, etc.). Groups are limited in size to allow for interaction. The aim is short term support structure for educators to use for work and home challenges. These sessions will be scheduled at different dates/times throughout the year.

### *Book Study Groups*

One of the simplest ways to support the well-being of educators while enhancing their knowledge and skills, is to bring them together in social work groups. Weekly meetings to discuss current and relevant topics such as SEL will enhance cohesion and support. Dr. Scherz has two new books due out including Whole School Health, following 15 educators from across the country in their personal growth journeys.

# Extras

---

Additional Services for individual district consideration. These are not part of the packages but available at a significant discount for our clients.

## ***Train the Trainer***

TC University will take up to 6 faculty members to be trained in supporting their district SEL/ Mental Health team. This certificate program will last 3-6 months depending upon the frequency of training sessions. This model saves long term money for districts who can scale back to a maintenance mode following the cessation of the program. The final result is faculty who can cultivate a strong PSEL program in their district.

## ***District Workshops & Presentations***

Specific school and district trainings are available throughout the year. With the foundational learning complete from the on-demand engagements, faculty will be ready for more experiential work. Districts can target specific issues relevant to their community, with the option to include professional actors and other unique mediums.

## ***Student Leadership Program***

A teacher/ facilitator will be trained how to implement this program for students in their district. The ideal training scenario preparing 3 faculty members to oversee this program district wide, for greater sustainability. The ideal candidates will have gone through all the TC PSEL virtual training. Ask for separate description of this program if interested.

## ***SEL Program for 1st through 6th classrooms***

Receive a 50% off voucher for our partner affiliate company, which is a student facing software delivering simple and effective strategies for educators and parents around SEL.

HeyKiddo™ Huddle is a complete social-emotional curriculum designed to be incorporated into the school day. It requires no preparation and is designed for teachers, parents who are homeschooling or tutors leading e-learning pods. Delivered in just 15-minutes a day, HeyKiddo™ Huddle easily integrates social and emotional skill development into the school day.

HeyKiddo™ Huddle provides teachers, homeschooling parents and tutors with:

- A complete no-preparation curriculum that takes 15-minutes a day
- Daily conversations that adjust to each child's needs
- Optional offline, creative weekly activities that deepen learning

# Personal Growth

## MENTAL HEALTH & SEL

*Custom Package*

### Custom white labeled platform with 4 Sets:

- Depression (3)
- Anxiety (4)
- Anxiety in Children (1)
- Substance Abuse (1)
- Coping with Covid-19 (1)
- SEL (6)
- SEL & Suicide Prevention (3)
- Autism (2)

### Additional Options:

- Webinars
- Coaching/ Consulting



## HEALTH & WELLNESS

*Custom Package*

### Custom white labeled platform with 4 Sets:

- Stress (1)
- Diet & Immunity (1)
- Children's Immunity (1)
- The Psychology of Weight Loss (1)
- Finding Happiness/ Work/Life Balance (1)
- Procrastination & Business (1)
- Preventing Burnout (1)

### Additional Options:

- Self-Care Workshop
- Coaching



## RELATIONSHIPS

*Custom Package*

### Custom white labeled platform with 4 Sets:

- Expressive Communication (1)
- Receptive Communication (1)
- Roadblocks to Communication (1)
- Sexual Dysfunction
- Improving (1) Arguments (1)
- Home School Partnerships (1)

### Additional Options:

- Parent Workshop
- Webinars



# Professional Development

## LEADERSHIP

*Custom Package*

### Custom white labeled platform with 4 Sets:

- Leadership in the Class (1)
- Integrity & Decision Making (1)
- Communication Styles (1)
- Feedback (1)
- Conflict (1)

### Additional Options:

- Consulting
- Coaching



## SCHOOL CULTURE

*Custom Package*

### Custom white labeled platform with 4 Sets:

- Class Climate & Student Behavior (1)
- Class Climate & Learning Support (1)
- The Future of School Safety (1)
- Class Climate & SEL (1)

### Additional Options:

- Presentations
- Workshops



## MANDATES

*Custom Package*

### Custom white labeled platform with 4 Sets:

- Bloodborne Pathogens (1)
- Asthma (1)
- Bullying & Cyberbullying (2)
- Substance Abuse (2)
- Equity & Diversity (2)
- Suicide (4)
- Harassment (1)

### Additional Options:

- Webinars





# Professional Development

## SOCIAL EMOTIONAL

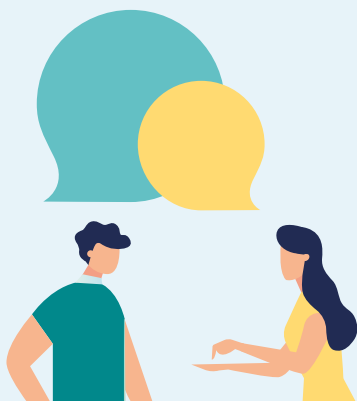
*Custom Package*

**Custom white labeled platform with 4 Sets:**

- PSEL (4)
- Suicide & SEL (4)
- Classroom Climate and SEL (1)
- SEL Themed Play (1)

**5 Webinars:**

- Coaching
- Workshops
- Escape Room



## LEGAL & ETHICAL

*Custom Package*

**Custom white labeled platform with 4 Sets:**

- Liability (1)
- Religion (1)
- Student Freedom of Expression (1)
- Teacher Freedom of Expression (1)
- Ethics (1)

**Additional Options:**

- Webinars
- Consulting



## ORIENTATION

*Custom Package*

**Custom white labeled platform with 4 Sets:**

- Autism (2)
- Process Mentoring (1)
- 504/ IEP/ CST (2)
- Autism (2)
- When to Confer with Counselor, Nurse or Principal (1)

**Additional Options:**

- Webinars
- Group Coaching

